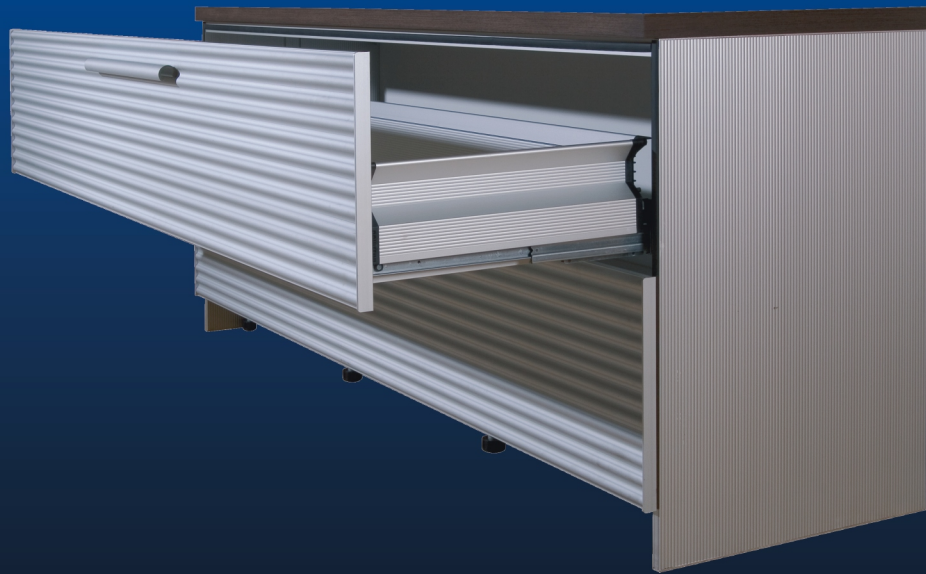
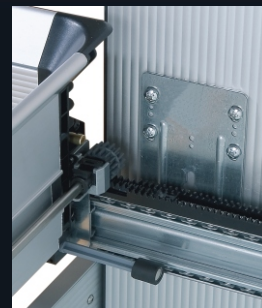


Wide drawer full extension – Serie 038



Innovative system solution for home and kitchen furniture

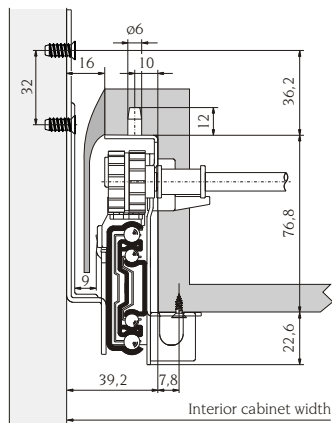
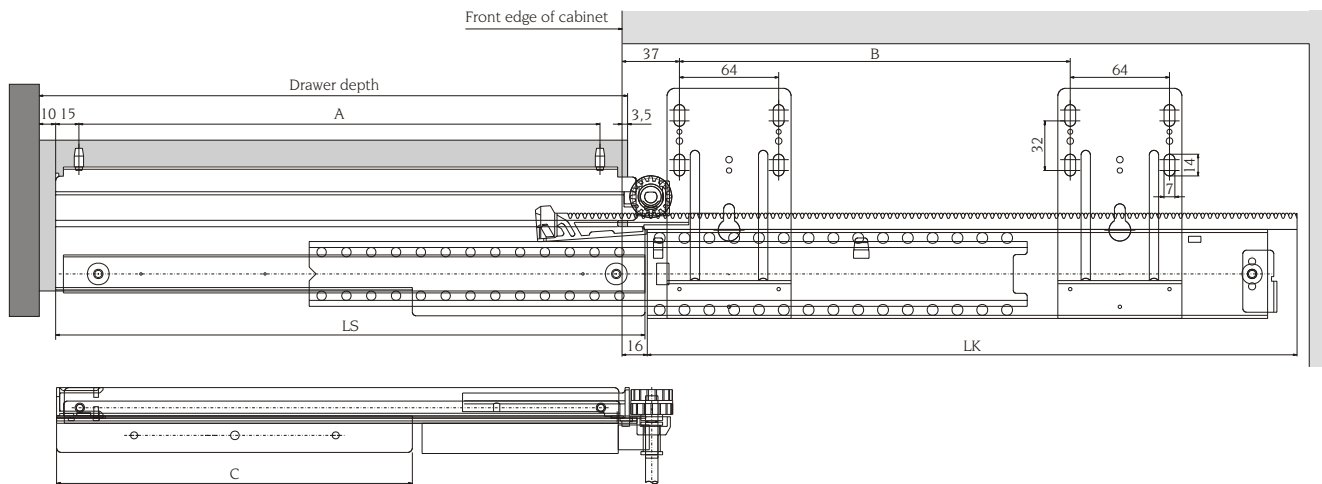
- dynamic load capacity up to 90 kg
- rack + pinion parallel guidance
- smooth movement without jamming
- automatic closing with damping function



Wide drawer full extension - Serie 038

- Load rate 90 kgs
- Rack + pinion parallel guidance
- Damped self-closing device

- Material of slide rails: zinc plated steel
- Material of ball retainers: pre-zinc plated steel
- Material of balls: hardened precision steel



Drawer depth [mm]	Cabinet depth [mm]	LS [mm]	LK [mm]	A [mm]	B [mm]	C [mm]
400	450	405	414	356	224	245
450	500	455	464	406	288	295
500	550	505	521	456	352	345

Parallel guidance:

No.	Article	Width	Mounting
1	Connection rod (premounted assembly)	interior width - 35 mm (max. 2000 mm)	insert in rear zinc brackets and snap-in the retainer clips
2	Support block	for width > 800 mm	fasten to backside of drawer

other lengths and hole pattern on request; subject to technical amendment

Cabinet fixing

- Euro-Screws
- Spax-Screws (optional)
- Height adjustment device

Drawer fixing

- Support brackets
- Euro-Screws
- Spax-Screws

Functional features

- Detent in opened position
- X Roll-out prevention
- Damped self-closing device

- -
 -
 -
 -
 -
 -
 - X
 -
- = standard
X = on request
- = special development



The Schock wide drawer system allows to conceal the slides in the design of the customer, e.g. with shrouds made of aluminium profiles.